

TRIMA ORIGINAL IMPLEMENTS



A SECURE SOLUTION FOR YOUR IMPLEMENT NEEDS

Maximum productivity with minimal loss of time. Without frills or compromise.

This is what the Trima range of market-leading implements is all about. Why? Because of the consistently high quality, which ensures maximum functionality and a long service life. Another reason is the impressive range that satisfies the most specific and varied requirements. Trima gives you the right tool for every job. Every day, every year – this is what we call a secure solution for your implement needs.

YOUR CHOICE OF IMPLEMENT HOOKS

Trima does not only give you the largest range of implements. Our implements also have a choice of hooks for use with most brands of loaders.

A: EURO

Implement hooks suitable for Trima with W-frame, Quicke series Q and other loader brands with Euro implement carriers.



B: SMS

Suitable for Trima/Bergsjö with SMS-mount, Quicke Combi mount, Kellve/Vreten/Howard and any loader with SMS implement carrier.



C: ÅLÖ TYPE 3

Suitable for wholly hydraulic loaders previous to Quicke Series Q.



Some implements will also fit loaders with the large and the small implement carrier from BM.



MULTI DOC 2™*

Save time and avoid problems. Multi Doc 2 is a very good aid if the front loader has an additional third (and even fourth) service. With a simple movement, the implement hydraulics are connected, easily and without any problems, even when the system is pressurised. Your work is resumed within seconds. The flat face blocks are easy to clean, reducing the risk of dirt finding its way into the tractor's hydraulic system.

* The Multi Doc 2 is available as an accessory.

IMPLEMENTS FOR BALES

EFFICIENT AND RELIABLE



QUADROGRIP®

Unbeatable handling of rolled and wrapped bales, large or small

QuadroGrip is the best implement on the market for handling of round and wrapped bales. The implement arms are mounted on 350 mm wide, extremely stable sliding plates, which move along the main frame. You can lock either the left or the right tine, and this will help when stacking. The sliding runners are serviceable and manufactured in high-quality polyethylene, and do not require lubrication. The sliding surfaces are vertical to stop the dirt from sticking. The result is reduced friction, silent movements, minimal wear and longer service life.



QUADROGRIP 200

Total width, cm	235
Bale size, cm	60-200
Arm length, cm	130
Weight, kg	433

IMPLEMENTS FOR BALES

SILOSPPLIT®

Split the bale easily and cheaply



SILOSPPLIT

Width, cm	120
Reach, cm	170
Weight, kg	110

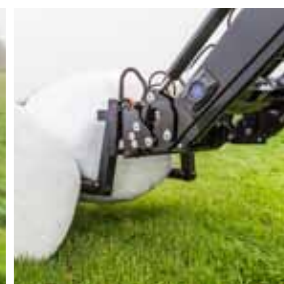
Until now, splitting bales has meant hard work or considerable expense. If you have a loader with double acting lifting cylinders, this problem is solved, thanks to Silosplit.

Silosplit can both transport and split bales. When you have placed the bale where it is to be split, you simply place the blade across the top of the bale and press it down. Straw and silage bales will easily split in two, simply and smoothly without the complication of additional hydraulics. After that, it is easy to handle the material. Silosplit is supplied with an easy-to-use blade guard that protects the sharp cutting edge.

IMPLEMENTS FOR BALES

FLEXIBAL®

Three implements in one



Flexibal is a strong and very flexible implement. The arms are operated hydraulically, with the steel tubes rolling under the bale. The steel tubes roll under the bale without damaging it when it is being handled. The generous length and diameter of the tubes distribute the pressure evenly over the bale preventing damage to the plastic wrapping when being handled. The steel tubes are quickly and easily removed when transporting straw or hay bales. When the steel tubes are removed, Flexibal may also be used for moving pallets (max. 1000 kg).

As an option, Flexibal may be fitted with an adjustable bale support on the back of the implement. This gives the possibility to handle larger bales and to stack bales on their ends.

For safety we strongly recommend the bale support especially if the loader is without parallel linkage or for tractors without a cab.

FLEXIBAL

Bale size, cm	max 180
Bale support, weight, kg	45
Weight, kg	195



IMPLEMENTS FOR BALES

FLEXIGRIP™

Careful and effective handling of lying and standing bales.



Storing bales upright on top of each other reduces the risk of air and moisture entering the bales.

The implement arms are mounted on heavy duty hinges that have replaceable bushings. You can lock either the left or the right implement arm, but there is still some movement left, and this makes it possible to stack bales tightly without damaging the plastic wrapping round the bale. Additionally the implement arms are designed in such a way that it is easy to reverse away from the bale and this is advantageous when bales have to be stacked tightly.

The uniquely curved and rounded shapes as well as the 90 mm tubes contribute greatly to the very careful handling of both lying and standing bales. Of special note are the long, curved tubes, formed out of one piece, without any sharp edges or welded joints. The upper extension to the tube is a special feature for Ålö, and it gives improved support when handling lying bales.

FLEXIGRIP	160	200
For bale sizes, min-max, cm	120-160	150-200
Weight, kg	262	287

IMPLEMENTS FOR BALES

UNIGRIP™

Proven advantages in design and light weight



Unigrip has well proven design and a low net weight. It is used for the same tasks as Flexigrip. The choice between these two implements depends on the work routines of the individual user. Unigrip is also well suited for smaller square bales (80 x 80 - 130-160 cm). The implement arms distribute the pressure evenly over a large area, and this ensures careful handling of the bales. Unigrip gripping arms are made of large diameter tubes and have no sharp edges or welded joints. This prevents the plastic round the bales from being damaged.

UNIGRIP	130	160
For bale sizes, min-max, cm	90-130	120-160
Weight, kg	200	240

Select the best equipment

Our bale handling implements are characterised by heavy-duty bearings in the implement arms, large gripping surfaces that distribute the pressure optimally as well as a total absence of sharp edges. We accept no compromise – quality must be number one.

SQUARE BALE FORK - SAFETY

For safe and efficient handling



The bottom box section of the Square Bale Fork is hinged, and this is an important safety detail. Firstly you can lock the tines in the upright position, increasing safety when driving, particularly on public roads. Secondly, the handling of bales is more effective and safer. When unloading, the bales are pushed into place using the main frame. If unloading takes place at full height, the top bale is pushed into place using the upper section of the implement and without pressing the long tines into the bale. Therefore there is no risk of the bale falling back out when you reverse.

The Square Bale Fork can be supplied with two different bottom frames. The 190 cm wide frame is suitable for long large bales. The 140 cm frame is supplied with two tines as standard, but this may be increased to a total of five tines if the client requires it.

The Square Bale Fork can be supplied with rear extension (for handling several bales simultaneously) or with a Bag hook (for lifting large sacks) as optional equipment. (Maximum load on the bag hook is 750 – 1250 kg depending on height).

SQUARE BALE FORK - SAFETY	140	190
Width, cm	140	190
Number of tines, std	2	5
Tine length, cm	125	125
Weight, kg	133	168

BALE SPIKE

Simple and effective



The bale spike is particularly well suited to handling round bales. The longer tine is used to safely transporting the bale. The shorter tine stops the bale from rotate.

BALE SPIKE

Width, cm	115
Tine length, cm	125
Weight, kg	60

SQUARE BALE FORK - STANDARD

For round and square bales



The Square Bale Fork is a simple and sturdy implement for both round and square bales. The tines in the lower box section can be installed 80 or 130 cm apart. The Square Bale Fork may be supplied with a U-shaped Rear extension that supports the top bale as an optional extra. The rear extension is a safety device that we strongly recommend especially if the loader is without parallel linkage or for tractors without a cab.

SQUARE BALE FORK - STANDARD

Width, cm	140
Number of tines, std	2
Tine length	82 or 125
Rear extension, weight, kg	42
Weight, kg	78

DURABLE PRODUCTIVITY



SILOCUT®

Versatile and extremely reliable

Silocut is a versatile and extremely reliable implement with low maintenance costs.

Thanks to the hardened cutting blades at the front edge and side sections, Silocut leaves a clean cut surface in the silage. This prevents the admission of air and generation of heat, critical for the quality of the silage. Note in particular the angled side blades that cut against the side plate at the rear of the implement. This function ensures a maximum cutting force.

Box section with high quality sturdy tines.

The box section is extra strong, designed for durability and long service life.

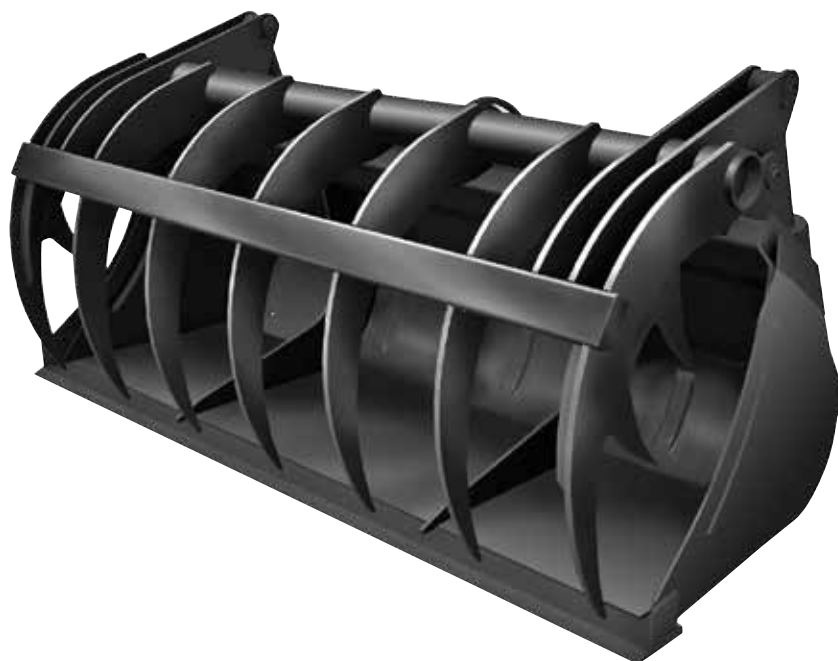
The fully enclosed grab frame prevents any loss of all types of silage particularly maize silage.

Silocut 190 and 230 are also available for loaders with the large BM implement carrier.



SILOCUT	120	150	190	230
Block size max, cm	120x78x77	150x78x77	190x78x77	230x78x77
Block volume max, m³	0,72	0,90	1,14	1,38
Opening, cm	77	77	77	77
Number of tines	9	12	15	18
Working width, cm	120	150	190	230
Weight, kg	420	490	625	720

STRONG AND EFFECTIVE



POWERGRAB™

Powergrab™ – your needs, our inspiration

This new design was inspired by your requirements. A very powerful universal implement with high work throughput. Well suited for silage as well as for many other demanding grabbing and scooping tasks.

Powergrab is first of all designed for handling silage, but is also suitable for various grabbing and scooping work in agriculture, council and lesser contract work.

When taking silage, the Powergrab is angled down at about 45 degrees into the silage, and this gives the maximal yield possible when the grabber is closed. The design of the teeth in the grab and in combination with rotating the grab downwards, creates an even block of silage without creating any air pockets and generating heat in the silage. The conical shape of the Powergrab makes filling and emptying a simple job. All the material is easily accessible, even along the walls, since the grabber part opens considerably.

Note! Should not be used on loaders with combination implement carrier. At max opening and max brake-up, the implement will interfere with the implement cylinders of the loader.



POWERGRAB	185	210	240	260
Width, cm	185	210	240	260
Volume, m³	1,0	1,15	1,30	1,40
Depth, cm	82	82	82	82
Weight, kg	540	650	690	780

SILAGE IMPLEMENTS

SILOGRAB®

Unusually strong and effective



Silograb is an extremely versatile implement. The close spacing of the tines virtually eliminate the spilling of all silage. The tines are mounted in a box section with welded sleeves. The tines make a circular motion through the material, which produces the cleanest cut, the least power requirement and the longest service life for the tines. In addition, the material is pressed against the back of the implement when the tines are lowered, keeping the silage in place even when driving over uneven terrain.

All models have two hydraulic cylinders. On the large models the cylinders are 15% larger than on the smaller models. Models 210 to 250 have strengthened supports in the upper part.

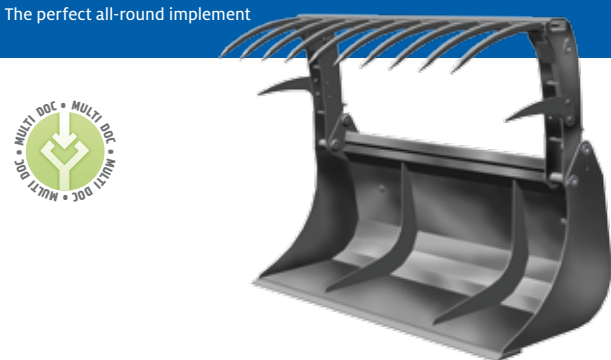
SILOGRAB	130	150	170	190	210	230	250
Width, cm	130	150	170	190	210	230	250
Volume, m ³	0,69	0,79	0,90	1,01	1,11	1,22	1,33
Depth, cm	85	85	85	85	85	85	85
Number of tines in the grabber	7+7	8+8	9+9	10+10	11+11	12+12	13+13
Weight, kg	254	274	304	325	365	380	408



SILAGE IMPLEMENTS

MULTIBENNE

The perfect all-round implement



If you have a diet feeder that has to be loaded with various feeds, Multibenne is your best choice. The requirements and demands to which we have paid particular attention are: It should be perfectly suited for its purpose – namely silage handling. Therefore the sides are tapered so that they can be inserted more easily into the silage. When the implement is crowded back the side plates are utilised so that loose material is not lost. A relatively short bottom section makes it easier to fill the bucket, all the way to the back. In this way, the centre of gravity moves towards the loader, and when unloading into high-sided vehicles, the bucket tip does not enter too far into them. The closed bottom section and the close spacing of the tines result in reduce losses from spillage.

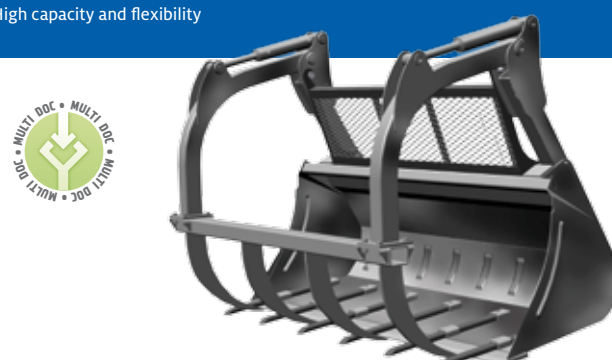
The closed bottom piece of the bucket ensures that all the material is always completely gathered up. Multibenne, designed according to the same principles as Silograb, can handle many different types of fodder, and manure as well. Therefore you need not change implements when feeding your animals.

MULTIBENNE	130	150	170	190	210	230	250
Width, cm	130	150	170	190	210	230	250
Volume, m ³	0,66	0,76	0,86	0,96	1,07	1,17	1,27
Depth, cm	80	80	80	80	80	80	80
Number of tines in the grabber	7	8	9	10	11	12	13
Weight, kg	280	304	360	386	423	447	477

SILAGE IMPLEMENTS

MAXI GRAPPLE™

High capacity and flexibility



The bucket is based on the sturdy and reinforced HD bucket. The grapple arm is mounted to the rear of the bucket, and this contributes to the power of this implement. The moving upper section of press-formed profiles is fitted with sturdy bearings, three-layer bearings and heavy pivot pins with heavy-duty locks. The section with the powerful teeth is bolted on. Stress and torsion forces are in this way transmitted to the entire implement. The teeth (version T) are simply attached in the bucket bottom. The protective mesh is a safety device that prevents material from falling onto the tractor (optional extra). It is strongly recommended especially if the loader is without parallel linkage or for tractors without a cab.

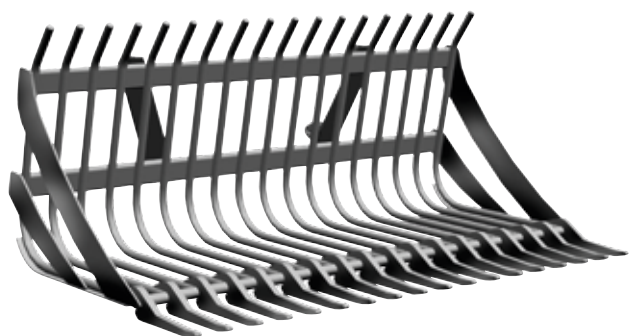
Maxi Grapple is used particularly in the US and Canada for handling round bales (large 2 m opening), loose hay, brash and branches, loose silage, manure and for bucket work generally. Teeth, protective mesh and the grapple arm are easy to remove when you need to use just the bucket.

MAXI GRAPPLE	210	210T	240	240T	260	260T
Width, cm	210	210	240	240	260	260
Depth, cm	81	81	86	86	86	86
Teeth, cm	-	24	-	24	-	24
Weight, kg	605	620	640	655	710	730

FORKS

STONE FORK

Productive and service-friendly



"Pick up and keep". The distinctive design provides considerable potential to fill the implement without dropping any of the stones already in the bucket. At the front end are mounted special, downwards-pointing tines made of Hardox steel. After many hours of hard work, it is then easy to replace these tines. The cross tubes (50 x 100 mm) stabilize the 30 mm tines. Please also note that the back end of this model is higher than that of previous models.

STONE FORK	150	200
Width, cm	150	200
Depth, cm	100	100
Height, cm	73	73
Number of bottom tines	14	18
Tine spacing, cm	11	11
Weight, kg	237	296

FORKS

MANURE FORK

More stable and more resilient than most



Three advantages make a big difference: Our manure forks have a specially manufactured bottom beam with welded sleeves for the tines that will not be deformed or bent when in use. The tines are fitted before painting the implement - metal touches metal. The tines are tightened to a very high torque. All-in-all this gives you an implement with a long service life.

MANURE FORK	130	150	170	190	230
Width, cm	130	150	170	190	230
Depth, cm	85	85	85	85	85
Number of tines	7	8	9	10	12
Weight, kg	123	136	152	165	203

ACCESSORIES

COUNTER-WEIGHT

A simple way to improving stability



The counter-weight improves the stability of the tractor/loader unit. Connection and disconnection is simply done using the attached coupling shaft.

The counter-weight helps to:

- improve stability and the distribution of weight
- lower the loads on front wheels and axle
- improve ground contact, which in turn improves traction.

COUNTER-WEIGHT

Weight, empty
186 kg
212 kg

Weight, filled (not factory filled)
800 kg with concrete
1000-1200 kg with concrete

ACCESSORIES

3-POINT LINKAGE

More possibilities



This implement can be used like the tractor's 3-point linkage to help move some implements around the farm. Available with either Euro or SMS hooks.

3-POINT LINKAGE

Weight, kg

78

LIFTING IMPLEMENTS

PALLET FORKS

Maximum durability and stability

The upper support of the backframe is made in one piece. The beam has holes for lateral adjustment and provides secure positioning of the forks. The load is distributed over a large area thanks to the large load-bearing surfaces of the forks. This special design gives you a stable fork that never tilts or wobbles. Naturally, the forks are designed with a wide margin of safety in mind.

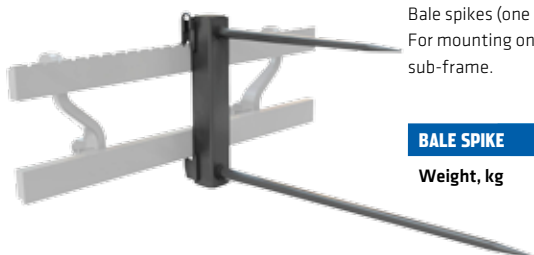


PALLET FORKS	1000 kg	1600 kg	2500 kg
Width, cm	140	140	140
Max load, kg	1000	1600	2500
Fork length, cm	97	97	120
Fork height, cm	50	95	95
Fork type	forgings	forgings	forgings
Weight, kg	122	160	170

LIFTING IMPLEMENTS, ACCESSORIES – PALLET FORKS

BALE SPIKE ATTACHMENT

Simple and flexible



Bale spikes (one short and one long). For mounting on the pallet fork sub-frame.

BALE SPIKE
Weight, kg
24

LIFTING IMPLEMENTS, ACCESSORIES – PALLET FORKS

LOG GRAB ATTACHMENT

For a better grip

Suitable for 1000 kg, 1600 kg, and 2500 kg pallet forks.



LOG GRAB ATTACHMENT
Weight, kg
85

LIFTING IMPLEMENTS

BIG BAG LIFTER

Simple and secure productivity

For safe handling of large bags. The height of the hook above ground level is normally the same as when the bottom of the large bag is level with the lowest point of the front loader when the bags are hanging from the big bag lifter. Notice the practical benefit of having the hook bent to one side. It is easy to see the hook from the driver's seat.



BIG BAG LIFTER
Width, cm
120
Height, cm
170
Max load, kg
800
Weight, kg
118

BUCKETS FOR ALL NEEDS

All buckets are conical and easy to fill, because the material does not have to be forced into the bucket. The conical, "hopper-shaped" design also allows for rapid and complete emptying of the bucket. Whatever your needs are or what demands you have, you will be able to find your new bucket in our range. There are a total of seven different models and 24 versions. There is also a special, high-tip bucket and a grading bucket.

THE NON-SPILL BUCKET

The buckets have a rounded bottom and conical shape. Numerous small folds make for a durable bucket, and the conical design allows for simple filling and complete emptying.

The upper edge of the bucket back ends with a U-beam. On the HD and HDV buckets this area has an additional angle profile welded all along the width of the bucket.

In order to have even greater torsional strength and stability, the wider buckets are fitted with an additional, profiled back-plate (not on L and LV models). Using a special overlap design, the HV buckets have a hole profile along the implement hooks, and this makes these large buckets stronger and more stable.

The sides have side reinforcements that make them even stronger. At the very bottom there is welded a triangular wear-piece, which simultaneously stabilises the cutting edge. On the HD buckets, this wear-piece runs all the way up along the side.

All buckets have extremely durable cutting edges (500 HB). Depending on bucket model and size, 12, 16 or 20 mm thick and 100, 150 or 200 mm wide cutting edges are used. Together with the parallel wear-pieces this makes the bucket bottom strong, resist torsion and hard-wearing.

The implement hooks contribute to the strong design. You will notice that hooks and locking holes are positioned along a fold in the metal. Depending on bucket model and size, there may be a double profile sheet inside the bucket.



NON-DROP DESIGN

Naturally it has been our aim to design and produce a bucket that does not allow spillage. What is the point of having a large volume bucket if you cannot fill it properly, or if material spills out of it? Therefore our buckets have sides that are laser-cut. The result is a bucket design where the rear edge and the front edge in particular are especially high. It is now possible to fill the bucket completely. You have complete control of the material, and the bucket does not spill any material.

THE RIGHT BUCKET – EVERYTIME

FIELDS OF APPLICATION	H	HT	HD	HDV	HV	L	LV	High tip	Grading bucket	MPB
Lighter digging and loading	●					●			●	●
Loading of grain, chips and snow	●			●	●	●	●	●		
Loading of material higher up								●	●	●
Heavy digging and loading	●	●	●	●						●
Work in gravel/sand, earth and stones	●	●	●							●
Contract work in gravel/sand, earth and stones	●	●	●							●
Grading	●		●						●	●
Professional clearing of snow	●		●	●	●					

● Best choice ● Good choice

BUCKETS

SERIES H

The soil bucket – sturdy and versatile favourite



The soil bucket – the most popular in our range – can do anything. The short bucket bottom makes the bucket strong and well suited to heavier tasks. The three larger buckets have an extra rounded profile back plate across its full width.

SERIES H	135H	160H	185H	210H	240H
Width, cm	135	160	185	210	240
Depth, cm	81	81	81	81	81
Height, cm	75	75	75	75	75
Volume (heaped), m³	0,54	0,65	0,72	0,82	0,95
Cutting edge WxT, mm	150/16	150/16	150/16	150/16	150/20
Weight, kg	147	166	205	252	294

BUCKETS

SERIES HD

Sturdy contractors bucket



Contractors bucket. This is the sturdiest bucket in our range together with our HDV buckets. This bucket is based on the H bucket. On the 210, 240 and 260 versions the steel is 20% thicker. Also, the HD buckets have thicker cutting edges, wider and longer bottom reinforcements, an extra angle reinforcement inside the bucket next to the implement hooks as well as an angled wear-plate at the back of the bucket.

SERIES HD	185HD	210HD	240HD	260HD
Width, cm	185	210	240	260
Depth, cm	81	81	86	86
Height, cm	75	75	75	75
Volume (heaped), m³	0,72	0,82	0,95	1,03
Cutting edge WxT, mm	150/20	150/20	200/20	200/20
Weight, kg	227	314	340	365

BUCKETS

SERIES HT

A soil bucket with teeth - for all kinds of heavy and demanding jobs.

Soil bucket with teeth. The same design as for the Series H.



SERIES HT	135HT	160HT	185HT	210HT
Width, cm	135	160	185	210
Depth, cm	81	81	81	81
Height, cm	75	75	75	75
Volume (heaped), m³	0,54	0,65	0,72	0,82
Cutting edge WxT, mm	150/16	150/16	150/16	150/16
Number of teeth	6	7	8	9
Weight, kg	152	172	211	259

BUCKETS

SERIES HDV

Our sturdiest volume buckets



These volume buckets are designed for professional users with larger tractors that use them a lot and/or lift heavy weights and who therefore have severe requirements for ruggedness and durability. The obviously sturdy design is noticeable in the steel plates that are 20% thicker compared to our other HV versions. This Heavy Duty Volume version is available in three sizes of 2.10, 2.40 and 2.60 meters.

SERIES HDV	210HDV	240HDV	260HDV
Width, cm	210	240	260
Depth, cm	109	109	109
Height, cm	98	98	98
Volume (heaped), m³	1,50	1,70	1,85
Cutting edge WxT, mm	200/20	200/20	200/20
Weight, kg	423	458	505

BUCKETS

SERIES HV

A light materials bucket – sturdy and versatile favourite



A sturdy material and snow bucket. This series is aimed at users that need to move large volumes. The generous volume is achieved by designing the bucket deeper and taller. All models have a double profile in the bottom as well as beside the implement hooks. That means that there is extra strength where the stresses are the greatest.

SERIES HV	200HV	220HV	240HV	260HV
Width, cm	200	220	240	260
Depth, cm	104	104	109	109
Height, cm	85	85	98	98
Volume (heaped), m³	1,16	1,28	1,70	1,85
Cutting edge WxT, mm	150/16	150/16	200/20	200/20
Weight, kg	273	294	415	443

BUCKETS

SERIES L

A competitive bucket for light duty work



A light bucket. The L bucket is an excellent choice if you only need it for light duties. The price is extremely competitive.

SERIES L	130L	180L
Width, cm	130	180
Depth, cm	80	80
Height, cm	75	75
Volume (heaped), m³	0,51	0,71
Cutting edge WxT, mm	100/12	100/12
Weight, kg	123	163

BUCKETS

SERIES LV

Perfect for materials with low volume weight.



A bucket for light materials. This series of buckets is suitable for handling grains, grass seeds, wood chips and other materials with low volume weights. The buckets have two vertical reinforcements next to the implement hooks.

SERIES LV	200LV	220LV
Volume (heaped), m³	1,13	1,25
Width, cm	200	220
Depth, cm	100	100
Height, cm	85	85
Cutting edge WxT, mm	100/16	100/16
Weight, kg	221	239

BUCKETS

HIGH TIP BUCKET

Effective higher up



The high tip bucket increases the unloading height by 120 cm. That means that even a short and compact front loader can fill a tall trailer when needed. The bucket pivots at the front edge, and therefore it is not necessary to wait for the front edge to be over the side of truck/trailer before you reverse. This saves time and increases the efficiency. High tip buckets are used for handling high volume materials high up, for example loading grains, grass seed, beets or wood chips.

HIGH TIP BUCKET	
Volume (heaped), m³	2,00
Width, cm	230
Depth, cm	120
Height, cm	120
Cutting edge WxT, mm	150/20
Weight, kg	480

BUCKETS

GRADING BUCKET

A sturdy and optimized design.



A heavy-duty grading bucket. The operator has a perfect view of the tip of the bucket thanks to the low back plate and the long, strong bottom plate. The bucket has a 20 mm heavy duty cutting edge. At the rear, under the 20 mm mounting plates is a welded 10 mm angle iron, which reinforces the bucket for grading jobs.

GRADING BUCKET		
Volume (heaped), m³	0,73	0,83
Width, cm	220	240
Depth, cm	110	110
Height, cm	50	50
Cutting edge WxT, mm	150/20	200/20
Weight, kg	337	408

SMART AND HIGH-PERFORMANCE FLEXIBILITY



MULTI PURPOSE BUCKET™

Well thought-out, reliable multi-purpose bucket

Once again, Trima demonstrates market leading insight with customer oriented design. The multi-purpose bucket gives you unbeatable versatility and can easily switch between:

- Bottom emptying, with improved emptying height
- Open bucket and excavate using blade
- Grab
- Sanding and gravelling via bottom opening

This makes the Multi-Purpose Bucket welcome news for professional farmers, local authorities and others who require efficient tools with maximum flexibility.

All models are available with Euro or Skid Steer hooks. Both the bottom and back of the bucket are made in a box design, which gives it a torsionally rigid and robust construction. The bucket has three hardened cutting edges: one at the leading edge of the bucket, one at the back edge and one in the digger blade's lower section. The sides have additional strengthening in the lower section where there is maximum wear. They are also fitted with toothed interiors for maximum grip. If you want to get the highest possible work capacity from your bucket, then the Multi-Purpose Bucket is the obvious choice.



MULTI PURPOSE	160MP/MPT	185MP/MPT	210MP/MPT
Volume (heaped), m³	0,48	0,56	0,66
Width, cm	160	185	210
Depth, cm	70/76	70/76	70/76
Height, cm	69	69	69
Cutting edge WxT, mm	150/16	150/16	150/16
Weight, kg	367/373	401/407	434/441



 **TRIMA®**
www.trima.nu



www.alo.se

Ålö AB
Brännland 300
SE-901 37 Umeå, Sweden
Tel: +46 (0)90 17 05 00
Fax: +46 (0)90 17 05 99